



# KMSD & WISCONSIN SCHOOL FINANCIAL FACTS

ACHIEVING  
IN THE TOP  
**10%**  
FUNDED  
IN THE BOTTOM 15%

The Kettle Moraine School District's vision of "Learning Without Boundaries" aims to prepare all students to be successful in the global economy. We are striving to offer students the best possible education with the dollars that are allocated to us by our taxpayers and the state. We are very proud that:

- On an international scale, KM students are performing at levels equal to and greater than their peers in Canada and European countries, including Finland.
- KM students continue to perform at high levels on the ACT exam and on state standardized tests.
- KM is a school district of choice. For every student who open enrolls out, three open enroll into KM.

## HOW IS KMSD AFFECTED BY STATE FUNDING?

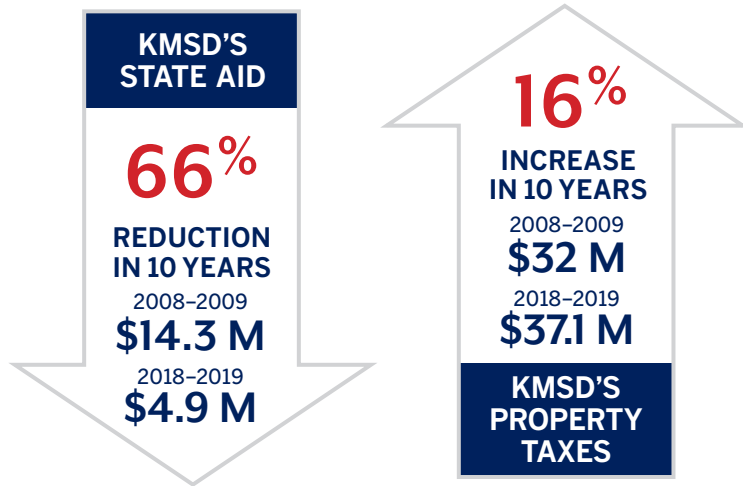
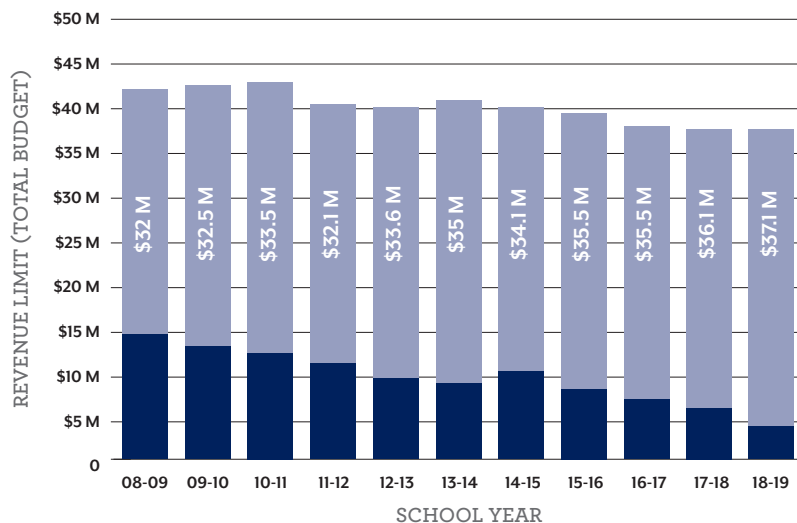
WI SCHOOL FUNDING FORMULA

PROPERTY TAXES  
STATE AID +

REVENUE LIMITS

In 1993 revenue limits were established. Revenue limits cap the amount a school district can receive per student. After state aid is distributed each year, a school district can tax its property owners up to the district's revenue limit amount. Therefore, as state aid goes down, property taxes go up.

### Relationship Between Kettle Moraine State Aid and Property Tax



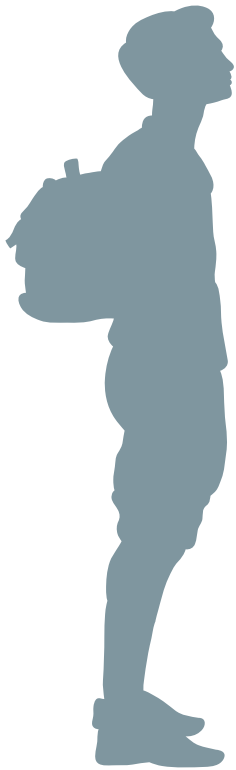
In 2018-19, KM experienced the largest decrease in state funding (15.37%) of all large school districts in Wisconsin.

# SCHOOLS ARE NOT FUNDED EQUALLY.

## THE WISCONSIN SCHOOL FUNDING FORMULA HAS NEGATIVELY AFFECTED THE KETTLE MORAINE SCHOOL DISTRICT.

When revenue limits were established in 1993, each Wisconsin school district was placed in a formula based on their spending history. KM's conservative spending placed the district in the bottom 15% of districts state-wide. Some districts, even with the same number of students and same demographics, continue to receive millions more per year because they were placed at a higher level in the formula **more than 25 years ago**.

## WAUKESHA COUNTY MAXIMUM REVENUE PER STUDENT IN 2018-2019



<b>\$11,646</b>	ELMBROOK
<b>\$11,305</b>	NEW BERLIN
<b>\$11,077</b>	MENOMONEE FALLS
<b>\$10,414</b>	PEWAUKEE
<b>\$10,377</b>	HAMILTON
<b>\$10,117</b>	OCONOMOWOC
<b>\$10,086</b>	MUSKEGO
<b>\$10,030</b>	ARROWHEAD UHS (& K-8'S)
<b>\$9,948</b>	<b>KETTLE MORAINE</b>
<b>\$9,828</b>	WAUKESHA
<b>\$9,400</b>	MUKWONAGO

**\$6.1 MILLION MORE\***  
per year than KM

### WITH MORE, KM COULD:

- **Avoid** making cuts to staff, programs and services
- **Provide** more competitive employee benefits
- **Take care** of building projects without asking for additional taxpayer support

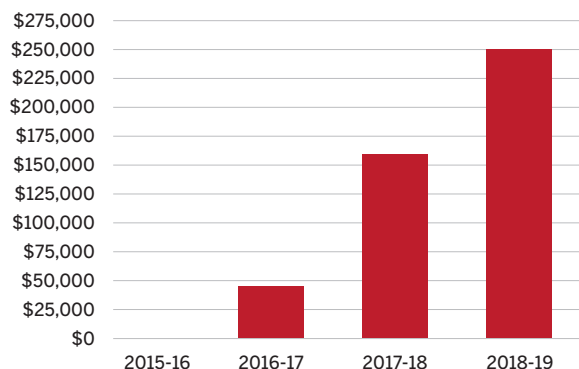
*\*Calculation based on the same number of students (KM student count of 3,576)*

## PROPERTY TAXES ARE FUNDING PRIVATE SCHOOLS

The Wisconsin school voucher program, which funds students attending private schools, is costing Kettle Moraine taxpayers more money each year. Each KM voucher student decreases the amount of state aid the district receives, requiring KM taxpayers to chip in more to support the district budget.

**TOTAL OF \$450K OF KM PROPERTY TAX DOLLARS HAVE GONE TO PRIVATE SCHOOL VOUCHERS**

KETTLE MORAINE SCHOOL DISTRICT PRIVATE SCHOOL VOUCHER AID DEDUCTION HISTORY



## KM HAS ALREADY CUT EXPENSES

Prior to Act 10, KM was taking steps to reduce expenses. Act 10 provided additional tools the district has used to continue the savings. The majority of cuts have been to employee salaries and benefits, KM's largest expense. KM continues to explore ways to cut costs as funding continues to decline.

**25%** REDUCTION IN HEALTH INSURANCE COST WITHIN 5 YEARS

SALARIES/BENEFITS  
**74% TO 67%**  
OF OPERATING BUDGET OVER 10 YEARS

POST-EMPLOYMENT BENEFITS ELIMINATED **\$27.5 MILLION**