



KMSD & WISCONSIN SCHOOL FINANCIAL FACTS

The Kettle Moraine School District's vision of "Learning Without Boundaries" aims to prepare all students to be successful in the global economy. We are striving to offer students the best possible education with the dollars that are allocated to us by our taxpayers and the state. We are very proud that:

- On an international scale, KM students are performing at levels equal to and greater than their peers in Canada and European countries, including Finland.
- KM students continue to perform at high levels on the ACT exam and on state standardized tests.
- KM is a school district of choice. For every student who open enrolls out, three open enroll into KM.



HOW IS KMSD AFFECTED BY STATE FUNDING?

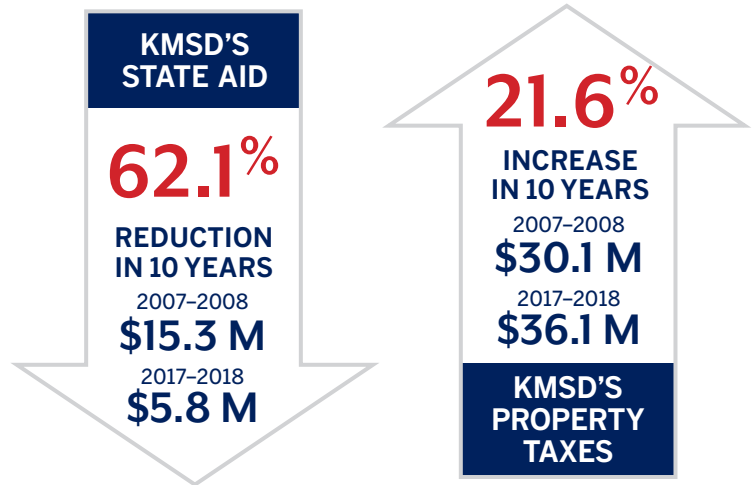
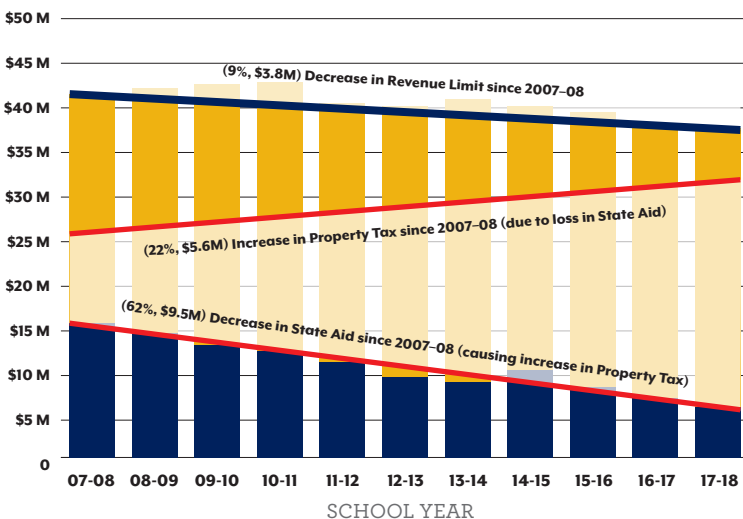
WI SCHOOL FUNDING FORMULA

PROPERTY TAXES
STATE AID +

REVENUE LIMITS

In 1993 revenue limits were established. Revenue limits cap the amount a school district can receive per student. After state aid is distributed each year, a school district can tax its property owners up to the district's revenue limit amount. Therefore, as state aid goes down, property taxes go up.

Relationship Between Kettle Moraine State Aid and Property Tax



KM's budget is relatively flat, but KM taxpayers are paying MORE.

DID YOU KNOW?

In 2017-18, KM experienced the second largest decrease in state funding (15.07%) of all large school districts in Wisconsin.

SCHOOLS AREN'T FUNDED EQUALLY

When revenue limits were established, each Wisconsin school district was placed in a formula based on their spending history. KM's conservative spending placed the district in the bottom 10% of districts state-wide. Some districts, even with the same number of students and same demographics, receive millions more per year because they were placed at a higher level in the formula.

WAUKESHA COUNTY MAXIMUM REVENUE PER STUDENT IN 2017-2018

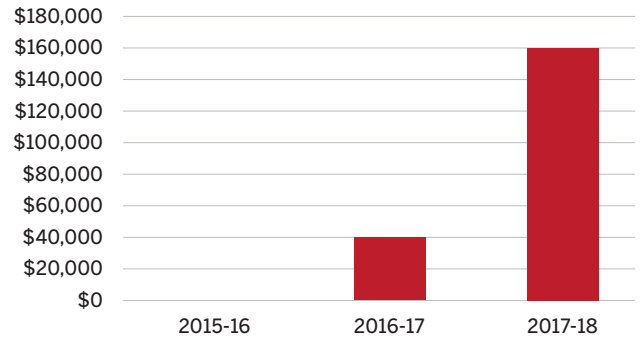
\$11,631	ELMBROOK
\$11,269	NEW BERLIN
\$11,068	MENOMONEE FALLS
\$10,408	PEWAUKEE
\$10,365	HAMILTON
\$10,346	WAUKESHA COUNTY AVG.
\$10,184	STATE AVERAGE
\$10,086	MUSKEGO
\$10,068	OCONOMOWOC
\$10,016	ARROWHEAD UHS (& K-8's)
\$9,870	KETTLE MORAINE
\$9,826	WAUKESHA
\$9,200	MUKWONAGO

PROPERTY TAXES ARE FUNDING PRIVATE SCHOOLS

The Wisconsin school voucher program, which funds students attending private schools, is costing Kettle Moraine taxpayers more money each year. Each KM voucher student decreases the amount of state aid the district receives, requiring KM taxpayers to chip in more to support the district budget.

TOTAL OF \$200K OF KM PROPERTY TAX DOLLARS HAVE GONE TO PRIVATE SCHOOL VOUCHERS

KETTLE MORAINE SCHOOL DISTRICT PRIVATE SCHOOL VOUCHER AID DEDUCTION HISTORY



KM HAS ALREADY CUT EXPENSES

Prior to Act 10, KM was taking steps to reduce expenses. Act 10 provided additional tools the district has used to continue the savings. The majority of cuts have been to employee salaries and benefits, KM's largest expense. KM continues to explore ways to cut costs as funding continues to decline.

21% REDUCTION IN HEALTH INSURANCE COST WITHIN 5 YEARS

74% TO 69% SALARIES/BENEFITS OF OPERATING BUDGET OVER 10 YEARS

ELIMINATED \$27.5 MILLION POST-EMPLOYMENT BENEFITS

KETTLE MORAINE STUDENT OPPORTUNITIES ARE IN JEOPARDY

ARE YOU CONCERNED? CONTACT OUR LEGISLATORS.

www.maps.legis.wisconsin.gov/

Governor Scott Walker
(608) 266-1212
govgeneral@wisconsin.gov

Senator Chris Kapenga (District 33)
(608) 266-9174, (800) 863-8883
Sen.Kapenga@legis.wisconsin.gov

Representative Cindi Duchow (District 99)
608-266-3007, (888) 534-0099
Rep.Duchow@legis.wisconsin.gov

Senator Scott Fitzgerald (District 13)
(608) 266-5660
Sen.Fitzgerald@legis.wisconsin.gov

Representative Joel Kleefisch (District 38)
(608) 266-8551, (888) 534-0038
Rep.Kleefisch@legis.wisconsin.gov

Representative Scott Allen (District 97)
(608) 266-8580, (888) 534-0097
Rep.Allen@legis.wisconsin.gov

Senator Stephen L. Nass (District 11)
(608) 266-2635
Sen.Nass@legis.wisconsin.gov

Representative Cody Horlacher (District 33)
(608) 266-5715, (888) 529-0033
Rep.Horlacher@legis.wisconsin.gov

FOR MORE INFORMATION on Wisconsin school funding, visit dpi.wi.gov/budget.